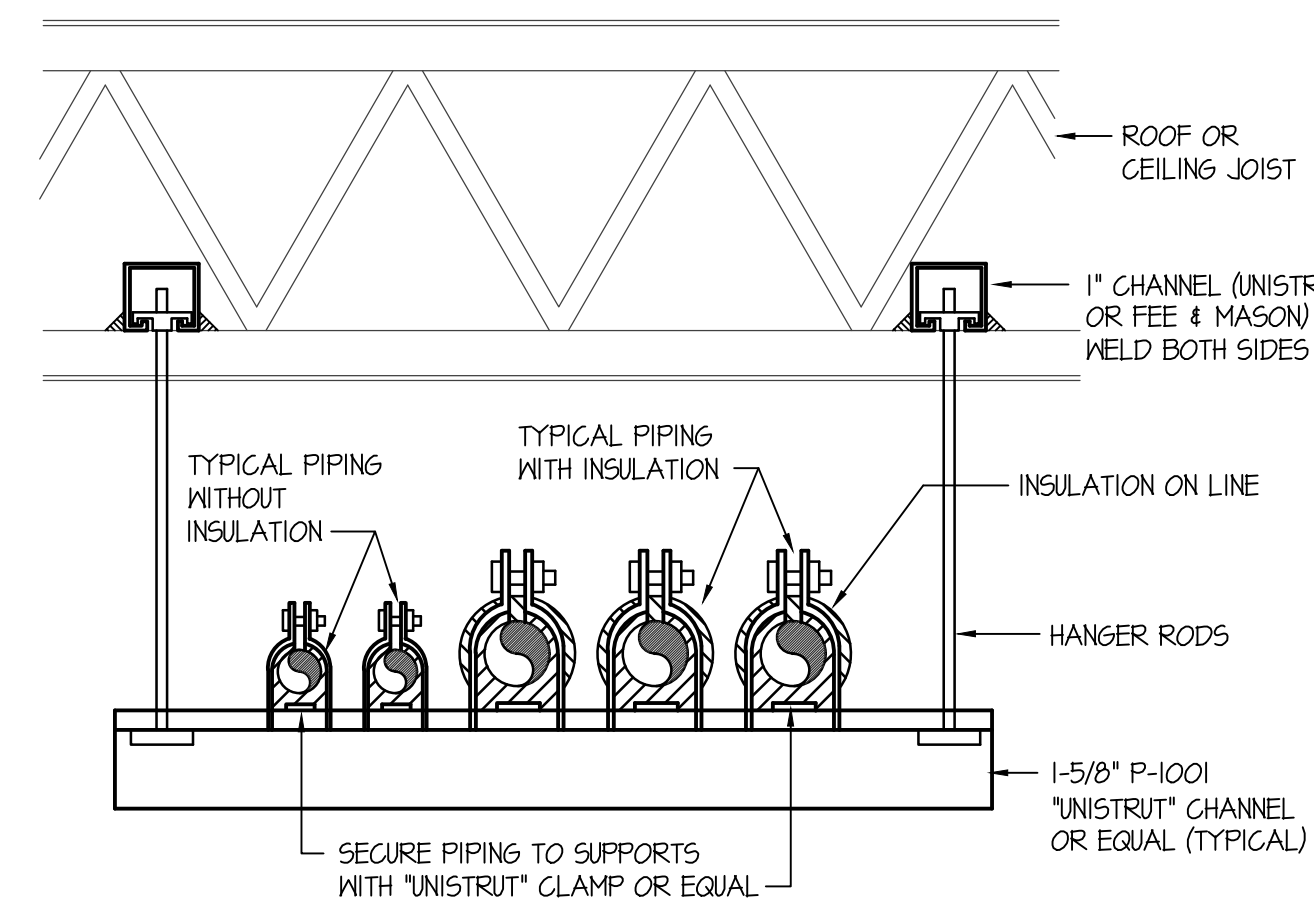


FLOOR DRAIN IN CONCRETE FLOOR
NO SCALE

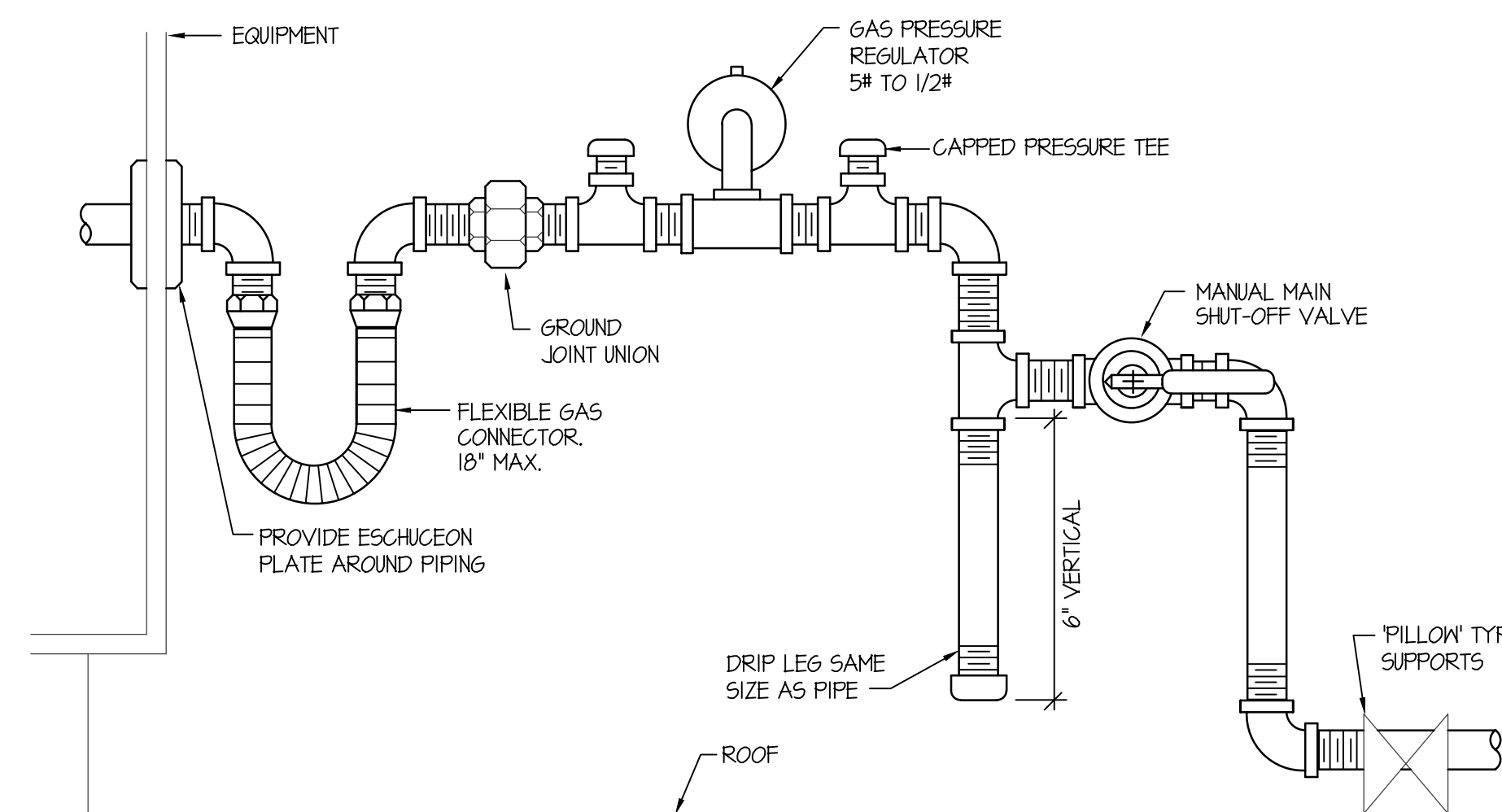
NOTE:
ALL PIPING SUPPORTS ARE TO BE INSTALLED PRIOR TO FIRE-PROOFING OF JOISTS. NO PIPING SUPPORTS ARE TO BE ATTACHED AFTER FIRE-PROOFING HAS BEEN DONE.

PIPE Ø	MAX. SPAN*
1"	7'-0"
1-1/2"	9'-0"
2"	10'-0"
2-1/2"	11'-0"
3"	12'-0"
4"	14'-0"
6"	16'-0"

* MOUNT PIPE SUPPORTS AT MAXIMUM SPACING FOR THE SMALLEST PIPING INCLUDED IN SUPPORT RACK.

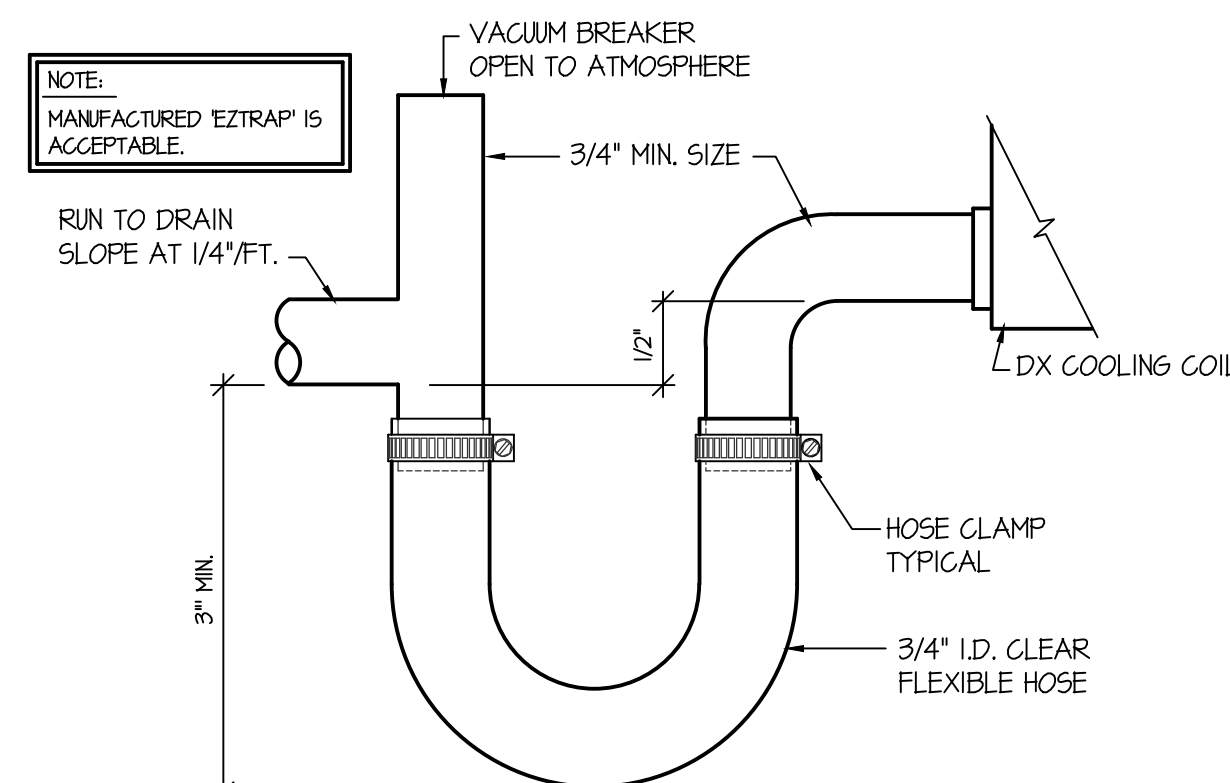


PIPE SUPPORT DETAIL
NO SCALE

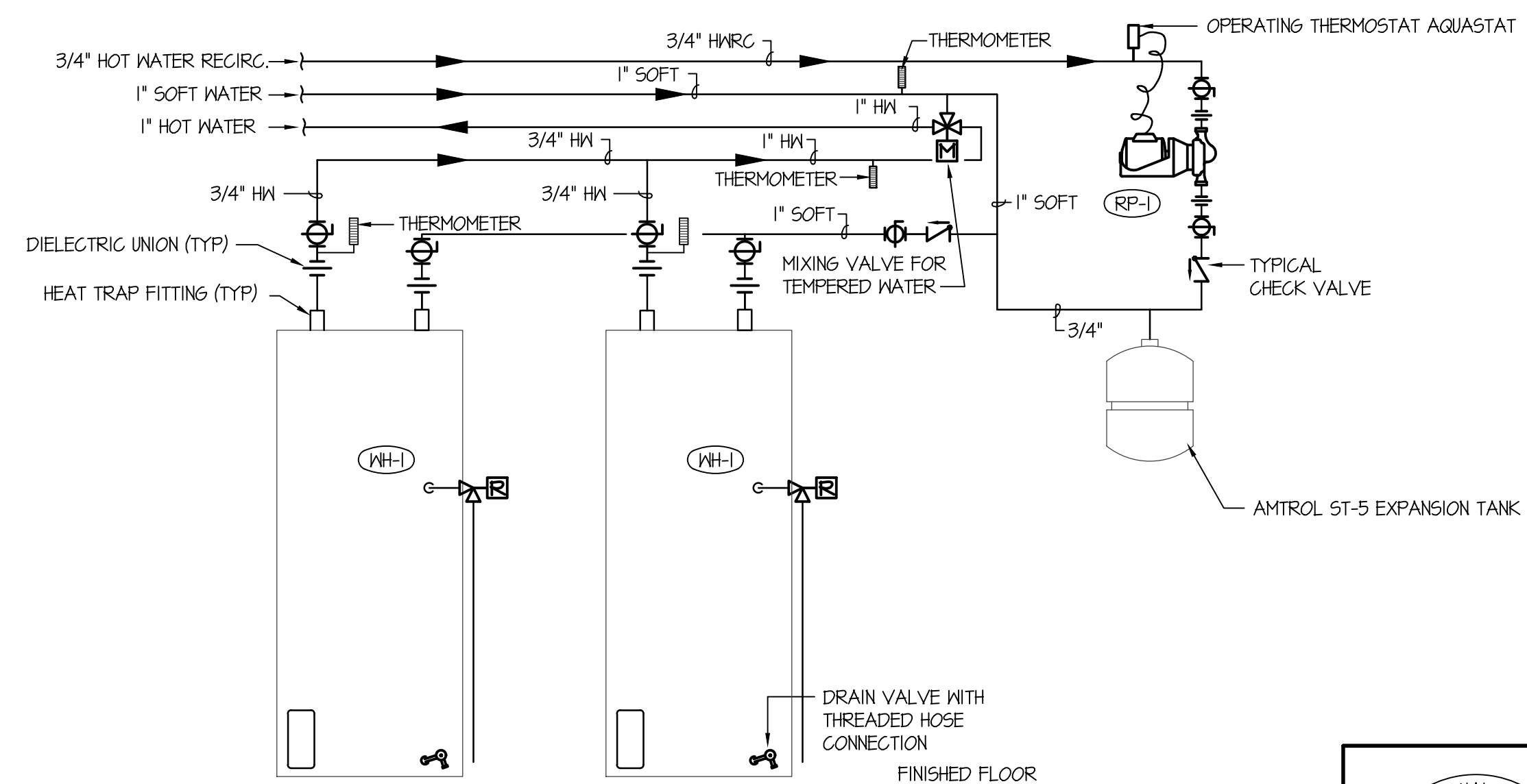


ROOF TOP GAS PRESSURE REGULATOR DETAIL
NO SCALE

FIXTURE SCHEDULE					
SYM.	DESCRIPTION	HOT	COLD	WASTE	VENT
(DF-1)	BI-LEVEL DRINKING FOUNTAIN - ELKAY MODEL EZ-STL6WELK WITH EZH2O BOTTLE FILLER FLEXI-GUARD BUBBLERS, 1/2" STOP AND 1-1/2" P-TRAP. PROVIDE ALL INTERCONNECTING PIPING AND DRAIN.	---	1/2"	1-1/2"	1-1/2"
(DW-1)	DISH WASHER - FURNISHED BY OTHERS AND INSTALLED BY CONTRACTOR. ROUGH-IN AND CONNECT 1/2" HOT WATER LINE FROM ADJACENT SINK WITH SHUT-OFF VALVE. RUN DRAIN LINE UNDER COUNTER AND CONNECT TO ADJACENT SINK WITH DISHWASHER TYPE CONNECTION.	1/2"	1/2"	1-1/2"	1-1/2"
(FD-1)	2" FLOOR DRAIN - ZURN Z-415 WITH 5"Ø NICKEL-BRONZE STRAINER AND 2" DEEP SEAL P-TRAP, ZURN I022 TRAP PRIMER.	---	---	2"	2"
(L-1)	ADA COUNTERTOP LAVATORY - KOHLER MODEL K-2405-I-O SELF-RIMMING "FARMINGTON" WITH KOHLER K-13472 BATTERY POWERED TOUCHLESS FAUCET & OPTIONAL MIXING VALVE K-13601, K-1115 OPEN GRID STRAINER, 1/2" BALL STOPS AND 1-1/4" P-TRAP. PROVIDE INSULATING JACKET ON HW & DRAIN UNDER LAVATORY.	1/2"	1/2"	1-1/2"	1-1/2"
(L-2)	ADA WALL HUNG LAVATORY - KOHLER K-2031-O "GREENWICH" WITH WALL CARRIER, KOHLER K-13472 BATTERY POWERED TOUCHLESS FAUCET & OPTIONAL MIXING VALVE K-13601, K-1115 OPEN GRID STRAINER WITH OFFSET WASTE LINE, 1/2" STOPS AND 1-1/4" P-TRAP. PROVIDE INSULATING JACKET ON HW AND WASTE PIPING.	1/2"	1/2"	1-1/2"	1-1/2"
(RP-1)	RECIRCULATING PUMP - GRUNDFOS MODEL UP15-10B1 BRONZE PUMP WITH 3/4" FLANGES (2 GPM @ 5' OF HEAD) 120/160/L. SEE DETAIL ON THIS SHEET.	3/4"	3/4"	---	---
(S-1)	DOUBLE COMPARTMENT SINK - ELKAY MODEL LR332PD WITH (2) LK-35 DUO-STRAINERS, 1/2" STOPS, 1-1/2" P-TRAP, AND ELKAY MODEL LK1000CR LEVER HANDLE FAUCET.	1/2"	1/2"	1-1/2"	1-1/2"
(T-1)	ADA TRANSFER SHOWER - AQUATIC MODEL 1363BFS WITH MOEN 18346 FLEXIBLE HOSE & ADJUSTABLE BAR FAUCET WITH POSITEMP VALVE, AND 2" DEEP SEAL P-TRAP.	1/2"	1/2"	2"	2"
(U-1)	ADA WALL MOUNTED URINAL - KOHLER K-4484-T "FRESHMAN" WITH WALL CARRIER & SLOAN OPTIMA BATTERY OPERATED FLUSH VALVE. MOUNT AT ADA HEIGHT.	---	3/4"	2"	2"
(WC-1)	ADA WALL MOUNTED FLUSH VALVE WATER CLOSET - KOHLER K-4325-O "KINGSTON" WITH ELONGATED BOWL, K-4670C WHITE OPEN FRONT SEAT, SLOAN REGAL BATTERY FLUSH VALVE AND WALL CARRIER. MOUNT AT ADA HEIGHT.	---	1"	4"	2"
(WC-2)	WALL MOUNTED FLUSH VALVE WATER CLOSET - KOHLER K-4325-O "KINGSTON" WITH ELONGATED BOWL, K-4670C WHITE OPEN FRONT SEAT, SLOAN REGAL BATTERY FLUSH VALVE AND WALL CARRIER.	---	1"	4"	2"
(WC-3)	ADA TANK TYPE WATER CLOSET - KOHLER K-3421 "HIGHLINE" W/ ELONGATED BOWL, K-4670-C WHITE OPEN FRONT SEAT, BOLT CAPS AND 1/2" STOP VALVE. RIGHT OR LEFT HAND FLUSH LEVER SO LEVER IS ON OPEN SIDE OF ACCESSIBLE PORTION.	---	1/2"	4"	2"
(WH-1)	ELECTRIC WATER HEATER - A.O. SMITH MODEL E6-50H45DV 50 GALLON ELECTRIC WATER HEATER WITH 4500 WATT NON-SIMULTANEOUS UPPER & LOWER ELEMENTS (240/60/1). AMTROL ST-5 EXPANSION TANK, T&P VALVE. PROVIDE POWERS 3/4" LM-441-10 MIXING VALVE.	3/4"	3/4"	---	---



DX COIL CONDENSATE DRAIN DETAIL
NO SCALE



DOMESTIC WATER HEATER PIPING DIAGRAM
NO SCALE

A NEW ADDITION FOR:

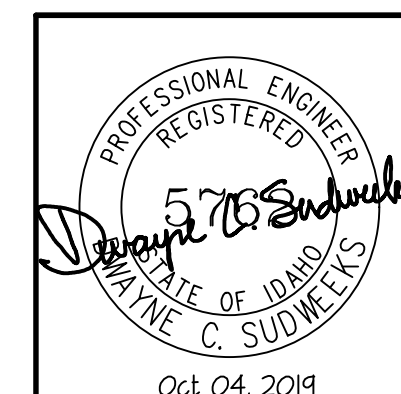
GLANBIA

IDAHO

PLUMBING DETAILS AND SCHEDULES

Laughlin Ricks Architecture
architecture/planning

935 Shoshone Street North • Twin Falls, Idaho 83301
(208) 736-8050 Fax: (208) 733-0950



Engineered Systems Associates
1355 EAST CENTER
POCATELLO, IDAHO 83201
PHONE: (208) 233-0501
FAX: (208) 233-0529
EMAIL: esa@engsystems.com
ESA JOB NUMBER: 19052

DATE:
Drawn: _____
Checked: _____

P2.0